

CIRCULATION PLAN OVERVIEW

Element of the Town of Phillipsburg Master Plan

Presented by:

Timothy M. O'Brien, PE, CME, PP and Joseph A. Brosnan, PE

March 9th, 2023

Prepared By:



Prepared For:

Town of Phillipsburg, Warren County



MUNICIPAL CIRCULATION GOALS AND OBJECTIVES

PEDESTRIAN CIRCULATION (SIDEWALKS AND TRAILS)

BIKE CIRCULATION

TRUCK CIRCULATION

PARKING

PUBLIC TRANSPORTATION

AUTOMOBILE CIRCULATION



CIRCULATION PLAN COMPONENTS



MUNICIPAL CIRCULATION GOALS AND OBJECTIVES



Encourage through traffic to use the State and Federal highway system and create disincentives for "short-cutting" through the community.

Work with the Delaware River Joint Toll Bridge Commission (Bridge Commission) and State and County agencies to improve access to the major highway systems, including such measures as: new local connections from major developments throughout the region to the highway system; An additional access onto I-76 west of Exit 3; truck weight limits on congested, limited capacity local roadways.



Provide designated connections between neighborhoods and the major roadway system and increase volume capacity on local connector roads by way of road, intersection and signalization improvements, on-street parking limitations and creation of new off-street parking areas.



Eliminate or improve "pinch" points in the circulation system.



Reduce truck traffic on neighborhood residential streets. Revise the zoning code to eliminate truck-dependent uses from areas with no or limited access to the major highway network. Identify and/or create specific truck routes through Town to local industrial zones/tracks which avoid residential streets to the greatest extent possible.



Reduce congestion on downtown streets to improve traffic flow and accessibility to local businesses.



Provide off-street parking in critical locations for both non-residential and residential uses. Develop an off-street parking plan as part of all development/redevelopment plans, neighborhood development plans, and any private development proposals.

 Van Cleef

MUNICIPAL CIRCULATION GOALS AND OBJECTIVES



Develop and implement a pedestrian/bicycle circulation plan to provide access to major community attractions such as shopping, services, schools, community facilities, parks and greenways.



Promote commuter bus and rail options, especially for the those who rely on non-personal vehicles. Provide local bus stops including information kiosks and shelters, commuter parking arrangements for bus users, and future extension of the Raritan Valley line to Phillipsburg.



Provide a complete sidewalk system throughout the Town that is safe and accessible to all pedestrians. All sidewalks should be ADA Accessible, with compliant curb ramps, crosswalk markings, applicable signage, and should be free from debris and growth. Building out each block should be promoted and pursued to the greatest extent practicable.



Community events, such as bike and running races, should be planned more frequently in Town to promote non-motorized circulation.

 Van Cleef

PEDESTRIAN CIRCULATION – SIDEWALKS AND TRAILS

- **Audits Were Established To Both:**
- **A) Get A Ground-level Assessment At Each Primary Corridor That Connects The Town**
- **B) Collect Input From Citizens Interested In Phillipsburg's Pedestrian Walkability**
- After the routes were established, a template form was prepared for public input, with segments of each route identified to clearly receive ratings in fields such as:
- Sidewalk Quality
- Neighborhood Safety
- Crosswalk Safety
- Crowdedness

Town of Phillipsburg Master Plan - Circulation Plan Element
Update: March 2023 - Public Participation

Route Name	Route Length (miles)	Route Length (miles)	Route Length (miles)	Route Length (miles)
Route 1 - South Main Street Business Route	1.12	1.12	1.12	1.12
Route 2 - East West School Route	1.12	1.12	1.12	1.12
Route 3 - Heckman Street Route	1.12	1.12	1.12	1.12
Route 4 - North South School Route	1.12	1.12	1.12	1.12

Instructions for completing this form:
This form is used to provide input on the quality of the sidewalks and trails along the routes identified in the Circulation Plan. The form is to be completed by the public and submitted to the Town of Phillipsburg. The form is to be completed by the public and submitted to the Town of Phillipsburg. The form is to be completed by the public and submitted to the Town of Phillipsburg.

Segment Number	Segment Description	Segment Length (miles)	Segment Length (miles)	Segment Length (miles)	Segment Length (miles)
1	South Main Street from Union Square to Roseberry Street	0.35	0.35	0.35	0.35
2	South Main Street from Roseberry Street to Phillipsburg Middle School	0.35	0.35	0.35	0.35
3	South Main Street from Phillipsburg Middle School to Heckman Street	0.35	0.35	0.35	0.35
4	South Main Street from Heckman Street to North South School	0.35	0.35	0.35	0.35
5	South Main Street from North South School to Union Square	0.35	0.35	0.35	0.35

Rating Scale:
1 = Excellent
2 = Good
3 = Fair
4 = Poor
5 = Very Poor

Figure : Pedestrian Circulation – Walkability Audit Template

VanCleeef

PROPOSED PEDESTRIAN ROUTE DESIGN – PHILLIPSBURG WALKABILITY CIRCULATION

ROUTE 1 - South Main Street Business Route

ROUTE 2 - East West School Route

- Connects Union Square to Roseberry Street to the Phillipsburg Middle School

ROUTE 3 - Heckman Street Route

Provides connectivity from the southern portion of the South Main Street corridor to Roseberry Street

ROUTE 4 - North South School Route

- North-south Route from Belvidere Road to Lock Street

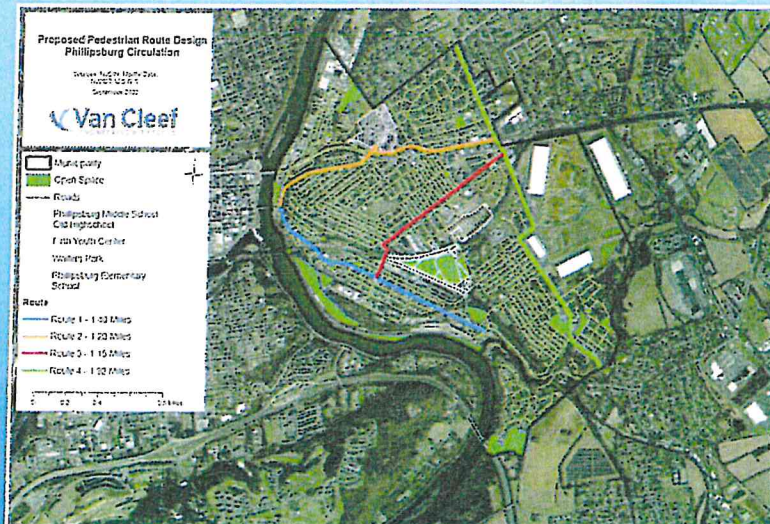


Figure : Pedestrian Circulation – Proposed Pedestrian Route Design

VanCleeef

PEDESTRIAN CIRCULATION – PEDESTRIAN GOALS

SHORT TERM GOALS

1. Replace sidewalks as part of capital projects
2. Streetscapes that include new sidewalks and lighting
3. Coordination with railway companies to inspect the conditions of sidewalk crossings within their jurisdictions.
4. Installation of additional fencing to secure steep cliffs.
5. Develop complete street plan to guide capital improvements
6. Maintain existing sidewalks in clean and tidy fashion

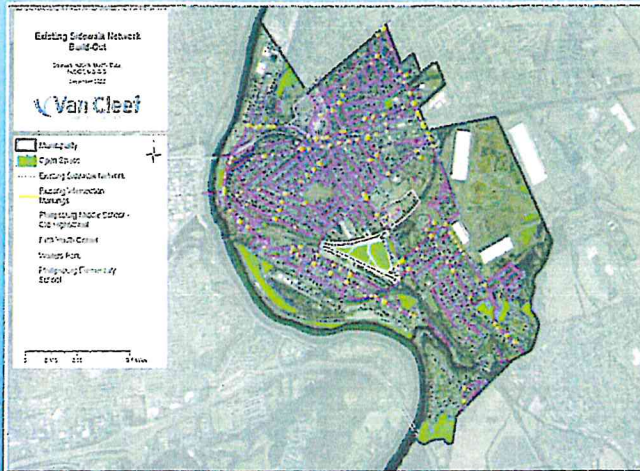


Figure : Pedestrian Circulation – Existing Sidewalk Network

Van Cleef
CITY PLANNING & DESIGN

