

SHORT TERM GOALS

1. Restrict bicycle use on sidewalks.
2. Adopt the Phillipsburg Bikeway Network as an ordinance to facilitate grants.
3. Install signage, "Sharrows", and bicycle parking infrastructure along the Phillipsburg Bikeway Network.
4. Fix any found potholes and other rideability issues along the Phillipsburg Bikeway Network to promote safe travel.
5. Coordinate with local community groups to promote biking events within the Town.

BIKE CIRCULATION

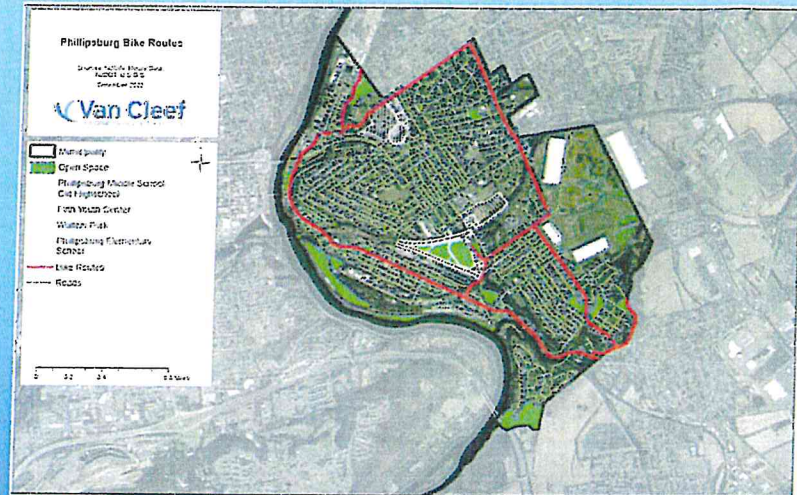


Figure : Bike Circulation – Existing Bike Routes

VanCleaf

LONG TERM GOALS

1. Coordinate with Warren Heritage Trail Committee to develop a parallel bikeway to the Scenic Byway Corridor
2. Coordinate with Easton regarding the Delaware Canal Trail Railroad Bridge
3. Utilize Grants from the NJDOT as applicable to develop and reconstruct portions of the Phillipsburg Bikeway Network

BIKE CIRCULATION

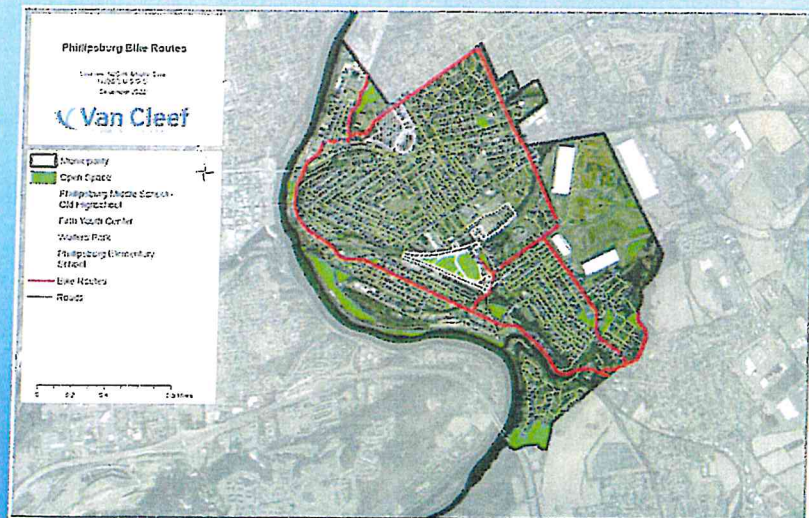


Figure : Bike Circulation – Existing Bike Routes

VanCleaf

TRUCK CIRCULATION

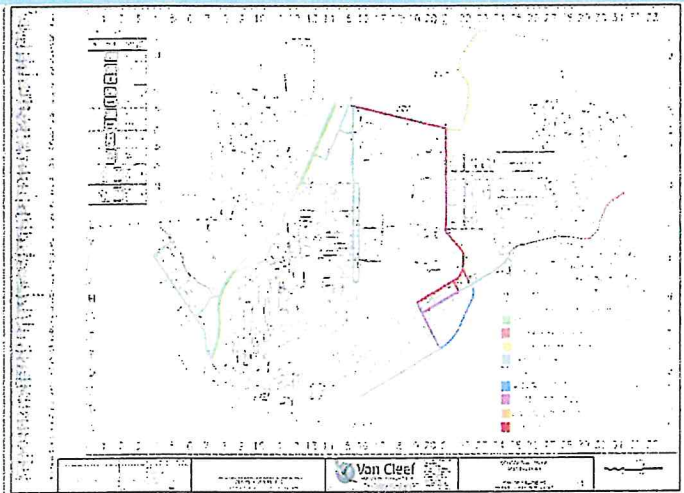


Figure : Truck Circulation – Conceptual Truck Routing Plan

SHORT TERM GOALS

1. Install signs that designate low clearance hazards for trucks.
2. Install wayfinding signs that may reduce truck movement conflicts.
3. Develop/participate in planning discussions on truck routes with regional planning agencies such as NJTPA and Warren County, as Phillipsburg becomes a cut through to access Route 22.
4. Finish/Obtain approval for the Truck Route Designation Report and coordinate with the NJDOT as necessary without utilization of Center Street Alternate Route.
5. Identify obstructions with the truck route as they occur and coordinate with industry to relocate or remove them.



TRUCK CIRCULATION

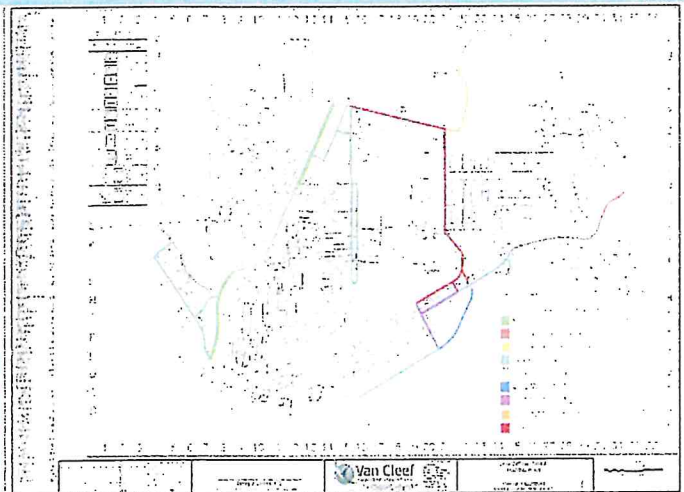


Figure : Truck Circulation – Conceptual Truck Routing Plan

LONG TERM GOALS

1. Improve intersections and routes utilized by trucks to reduce impact to Town.
2. Improve turning radius at intersections.
3. Upgrade traffic signal to reduce pole knock downs.
4. Develop improved truck turn around at Union Square to reduce need to trucks to utilize South Main Street.
5. Coordinate with rail providers to reduce clearance conflicts within the Town.
6. Improve access to rail lines to reduce truck demand at local business.
7. Develop a partnership with the county to facilitate future truck traffic studies and improvements.



PARKING

SHORT TERM GOALS

1. Coordinate with developers in the Riverfront Redevelopment Area to construct larger parking facilities for the Downtown.
2. Continue monitoring parking permit usage and adjust parking ordinance as required. Maintain existing parking lot payments and facilities.
3. Consider changing the direction of roadways to allow for additional parking on certain roads
4. A community subcommittee should be consider to be formed on parking made of primarily of community members that could prepare requests and suggestions to the Town Administration to review or possible community input/suggestion form that residents could submit to request roads to be looked at.
5. Add parking wherever feasible as opportunities arise.

LONG TERM GOALS

1. Consider constructing permanent parking facilities in targeted areas to relieve parking congestion downtown.
2. Coordinate with developers and redevelopers to add parking to the greatest extent possible with off-street parking.
3. Consider developing shared parking agreements between existing business and organizations during off-hours to alleviate problem areas. Review and revise zoning to better help control parking and parking requirements.
4. Investigate locations for electrical vehicle parking and pursue associated grant opportunities. The State has changed its Energy Master Plan goals to move up EV only new vehicles sales to 2035, which could result in a significant need for EV parking.
5. Consider overflow parking areas which shuttles could alleviate parking shortages or changing technical enable automation in vehicles that enable vehicles to be parked further from destination.

VanCleeef

PUBLIC TRANSPORTATION

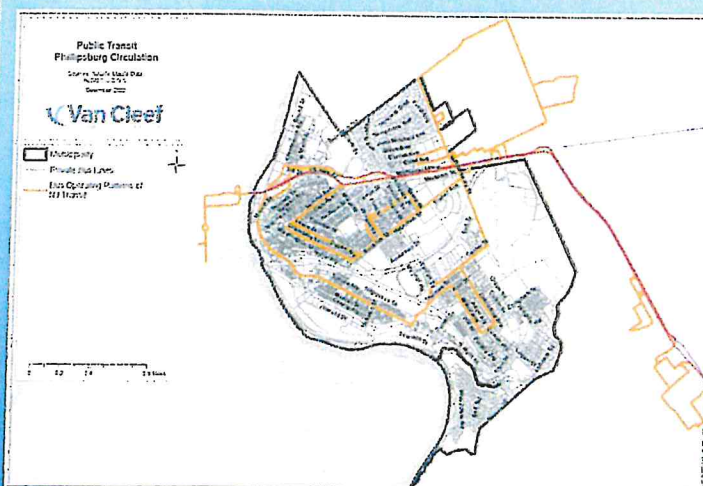


Figure : Public Transit – Operational Bus Lines

SHORT TERM GOALS

1. Maintain existing shuttle services as coverage routes to facilitate local circulation to citizens without vehicles in Phillipsburg.
2. Coordinate with Transit Providers to add stops as requested (such as the Hillcrest Apartments and/or Senior Center areas).
3. Develop and maintain relations with public transit coordinators and routinely check in to keep goals and objectives in alignment with this document and vice-versa.

LONG TERM GOALS

1. Maintain support for a future extension of the Raritan Valley line into Phillipsburg.
2. Maintain support for senior citizens in regards to bus access.

VanCleeef

AUTOMOBILE CIRCULATION

SHORT TERM GOALS

1. Continue to perform maintenance on roadways
2. Apply for Municipal Aid grants through the NJDOT as applicable
3. Continue to analyze the state of each intersection within Phillipsburg through Engineering Traffic Reports and similar studies
4. Coordinate with the Toll Bridge Commission regarding traffic at the Free Bridge and Union Square
5. Develop traffic calming measures such as speed bumps and curb ramps where applicable.
6. Consider changing the direction of encumbered two-way roads into one-way roadways for added room and parking in roads.

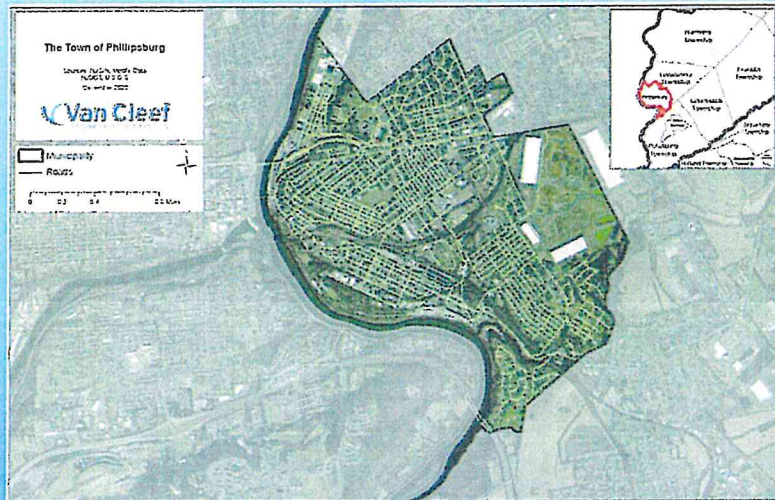


Figure : Automobile Circulation – Road Network

Van Cleef

AUTOMOBILE CIRCULATION

LONG TERM GOALS

1. Address intersection reconfigurations pursuant to previously identified problem areas (See Appendix D)
2. Execute previously identified plans to help address parking and congestion issues within Phillipsburg
3. Coordinate with NJDOT regarding removal of turnabouts along Route 22.

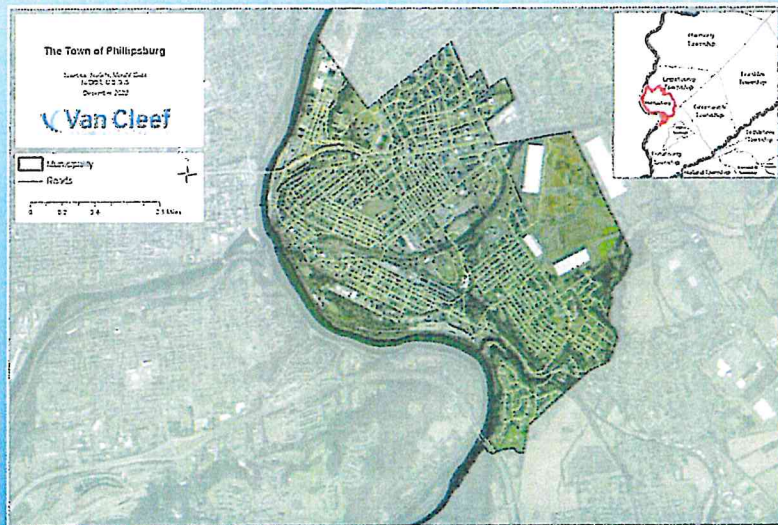


Figure : Automobile Circulation – Road Network

Van Cleef



Thank You For
Your Participation!

Prepared By:



Prepared For:

Town of Phillipsburg, Warren County

Feedback?

Please Feel Free to Contact:

Town of Phillipsburg Land Use Board

Kelly Lefler, Secretary

120 Filmore Street

Phillipsburg, NJ 08865

Phone: (908) 454-5500, Ext. 370

klefler@phillipsburgnj.org

